

---

Q1092 - George rizk, 03642251, Rmeil

Rony Chiha  
4-8 Harley Crescent  
Condell Park  
NSW 2200  
P: +96170619421 M: +96171727274

**Quote Number: Q1092**

Quote Valid for 30 days

Building Type: Residential

Quote Date: 9/09/2020

---

*Rmeil*

This apartment has been damaged by "Beirut Explosion" on the 4th of August 2020. Steps of Hope in collaboration with A-Tech Australia took the initiative to help in the renovation of damaged houses, to get people back to their homes before winter comes.

Apartment damages survey:

- Sliding window: 242.3 x 137.5 aluminum color lacke brown glass color stoned 6mm
- Tube 4 x 10 length 243 cm
- Glass dimension 6 mm: 70.7 x 77 qty = 3
- A carpenter is needed to assess the damage



Q1092 - George rizk, 03642251, Rmeil

## Estimate

### Customer:

Rony Chiha  
 4-8 Harley Crescent  
 Condell Park  
 NSW 2200  
 Ph: +96170619421  
 Email: help@sohope.org.au

### Estimate Details:

Net Total: \$676.00  
 Markup: \$0.00 (0%)  
 Tax: \$0.00  
**Estimate Total: \$676.00**

Building Type: Residential  
 Date Prepared: 9/09/2020

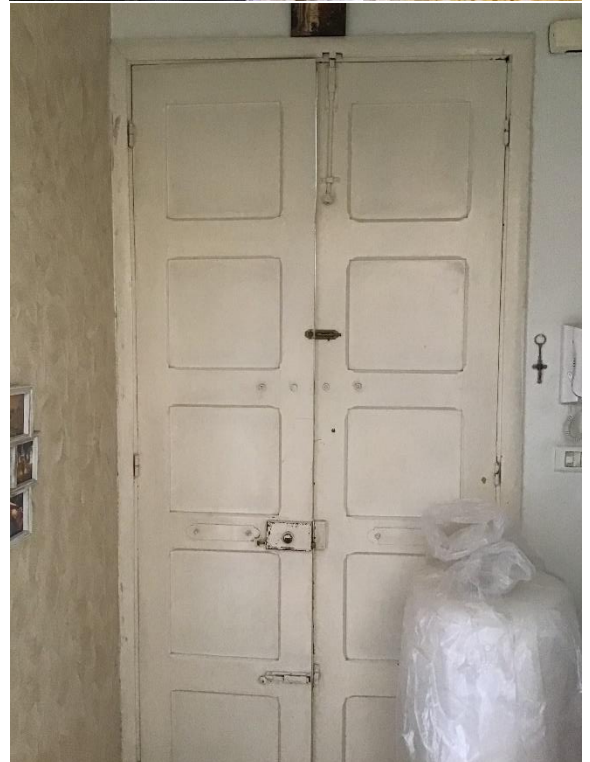
Cost Items				
Code	Description	Units / UOM	Unit Cost	Total
<b>1</b>	<b>Glass</b>			<b>\$30.00</b>
1.1	6mm Clear Glass	2.000 m2	\$15.00	\$30.00
	6mm Clear Glass	2.000 m2	\$15.00	
<b>2</b>	<b>Materials</b>			<b>\$526.00</b>
2.1	Sliding Window Stoned	3.300 m2	\$120.00	\$396.00
2.2	Tube	1.000 quantity	\$30.00	\$30.00
2.3	Wood Door	1.000 quantity	\$100.00	\$100.00
<b>3</b>	<b>Labor</b>			<b>\$120.00</b>
3.1	Carpenter	1.000 Day	\$40.00	\$40.00
	Carpenter	1.000 Day	\$40.00	
3.2	Professional Installer	1.000 Day	\$55.00	\$55.00
	Professional Installer	1.000 Day	\$55.00	
3.3	Second Installer	1.000 Day	\$25.00	\$25.00
	Second Installer	1.000 Day	\$25.00	

Net Total: \$676.00

Markup: \$0.00

Tax: \$0.00

**Estimate Total: \$676.00**





**Steps of Hope**

4-8 Harley Crescent Condell Park NSW 2200

Ph: 0474000444

[sohope.org.au](http://sohope.org.au)

Email: [help@sohope.org.au](mailto:help@sohope.org.au)

ABN: 84636391298