
Q1156 - Youssef gemayel, 03459555, Rmeil 5th floor

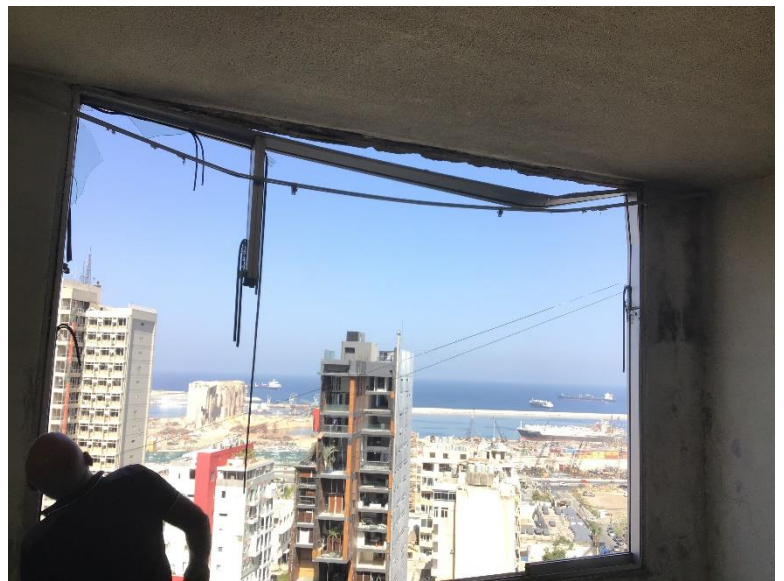
Rony Chiha
4-8 Harley Crescent
Condell Park
NSW 2200
P: +96170619421 M: +96171727274

Quote Number: Q1156
Quote Valid for 30 days
Building Type: Residential
Quote Date: 29/09/2020

This apartment has been damaged by "Beirut Explosion" on the 4th of August 2020. Steps of Hope in collaboration with A-Tech Australia took the initiative to help in the renovation of damaged houses, to get people back to their homes before winter comes.

Apartment damages survey:

- Need a concrete technician to assess the damage.
- Need a carpenter to assess the damage.



Q1156 - Youssef gemayel, 03459555, Rmeil 5th floor
Estimate

Customer:

Rony Chiha
4-8 Harley Crescent
Condell Park
NSW 2200
Ph: +96170619421
Email: help@sohope.org.au

Estimate Details:

Net Total: \$2,351.00
Markup: \$0.00 (0%)
Tax: \$0.00
Estimate Total: \$2,351.00
Building Type: Residential
Date Prepared: 29/09/2020

Cost Items				
Code	Description	Units / UOM	Unit Cost	Total
1	Aluminium and Glass			\$965.00
1.1	6mm Glass	3.000 m2	\$15.00	\$45.00
	6mm Clear Glass	3'	\$15.00	
1.2	Aluminium window Double Glazed	8.000 quantity	\$115.00	\$920.00
	Aluminium window Double Glazed	8'	\$115.00	
2	Materials			\$1,050.00
2.1	concrete work	1.000	\$150.00	\$150.00
2.2	Wood + accessories	1.000	\$900.00	\$900.00
3	Labor			\$336.00
3.1	Professional Installer	2.000 Day	\$55.00	\$110.00
	Professional Installer	2'	\$55.00	
3.2	Second Installer	2.000 Day	\$35.00	\$70.00
	Second Installer	2'	\$35.00	
3.3	Carpenter	2.000 Day	\$40.00	\$80.00
	Carpenter	2'	\$40.00	
3.4	Forman	2.000 Day	\$38.00	\$76.00
	Forman	2'	\$38.00	

Net Total: \$2,351.00

Markup: \$0.00

Tax: \$0.00

Estimate Total: \$2,351.00



Steps of Hope

4-8 Harley Crescent Condell Park NSW 2200

Ph: 0474000444

sohope.org.au

Email: help@sohope.org.au

ABN: 84636391298