
Q1163 - Charles abou assaf, 03533976, geitawi

Rony Chiha
4-8 Harley Crescent
Condell Park
NSW 2200
P: +96170619421 M: +96171727274

Quote Number: Q1163

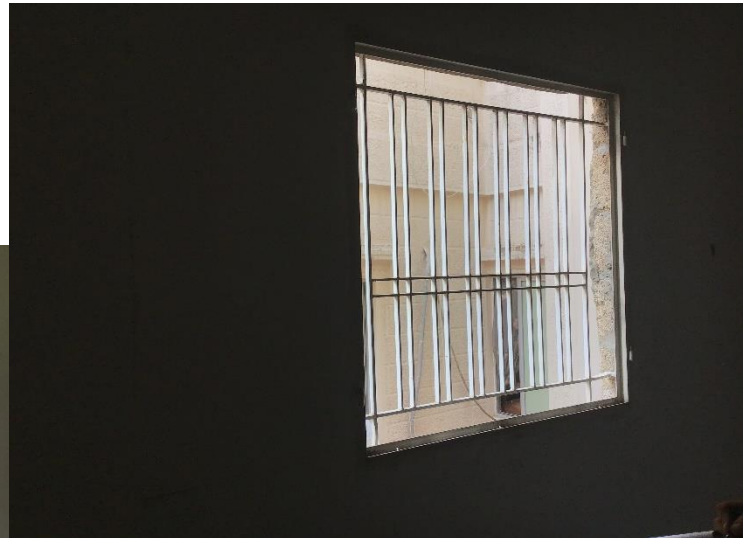
Quote Valid for 30 days
Building Type: Residential
Quote Date: 29/09/2020

This apartment has been damaged by "Beirut Explosion" on the 4th of August 2020. Steps of Hope in collaboration with A-Tech Australia took the initiative to help in the renovation of damaged houses, to get people back to their homes before winter comes.

Apartment damages survey:

- Need a carpenter to assess the damage
- Need a concrete technician you assess the damages
- 6 mm glass clear:

35.7 x 44.2
qty 2 54.5 x 44.3
qty 2 35.7 x 44.2
qty 2 54.5 x44.2
qty 2



Q1163 - Charles abou assaf, 03533976, geitawi

Estimate

Customer:

Rony Chiha
 4-8 Harley Crescent
 Condell Park
 NSW 2200
 Ph: +96170619421
 Email: help@sohope.org.au

Estimate Details:

Net Total: \$560.00
 Markup: \$0.00 (0%)
 Tax: \$0.00
Estimate Total: \$560.00

Building Type: Residential
 Date Prepared: 29/09/2020

Cost Items				
Code	Description	Units / UOM	Unit Cost	Total
1	Glass			\$30.00
1.1	6mm Glass	2.000 m2	\$15.00	\$30.00
	6mm Clear Glass	2'	\$15.00	
2	Materials			\$350.00
2.1	Wood + accessories	1.000	\$150.00	\$150.00
2.2	concrete work	1.000	\$200.00	\$200.00
3	Labor			\$180.00
3.1	Professional Installer	2.000 Day	\$55.00	\$110.00
	Professional Installer	2'	\$55.00	
3.2	Second Installer	2.000 Day	\$35.00	\$70.00
	Second Installer	2'	\$35.00	

Net Total: \$560.00
 Markup: \$0.00
 Tax: \$0.00
Estimate Total: \$560.00

