

---

Q1178 - Rami rizkallah, 70/693267, achrafieh

Rony Chiha  
4-8 Harley Crescent  
Condell Park  
NSW 2200  
P: +96170619421 M: +96171727274

**Quote Number: Q1178**  
Quote Valid for 30 days  
Building Type: Residential  
Quote Date: 2/10/2020

---

This apartment has been damaged by "Beirut Explosion" on the 4th of August 2020. Steps of Hope in collaboration with A-Tech Australia took the initiative to help in the renovation of damaged houses, to get people back to their homes before winter comes.

Apartment damages survey:

- Need a carpenter to assess the damage
- 4 mm clear,

134 x 30.5 Qty = 2



Q1178 - Rami rizkallah, 70/693267, achrafieh

**Estimate**

**Customer:**

Rony Chiha  
 4-8 Harley Crescent  
 Condell Park  
 NSW 2200  
 Ph: +96170619421  
 Email: help@sohope.org.au

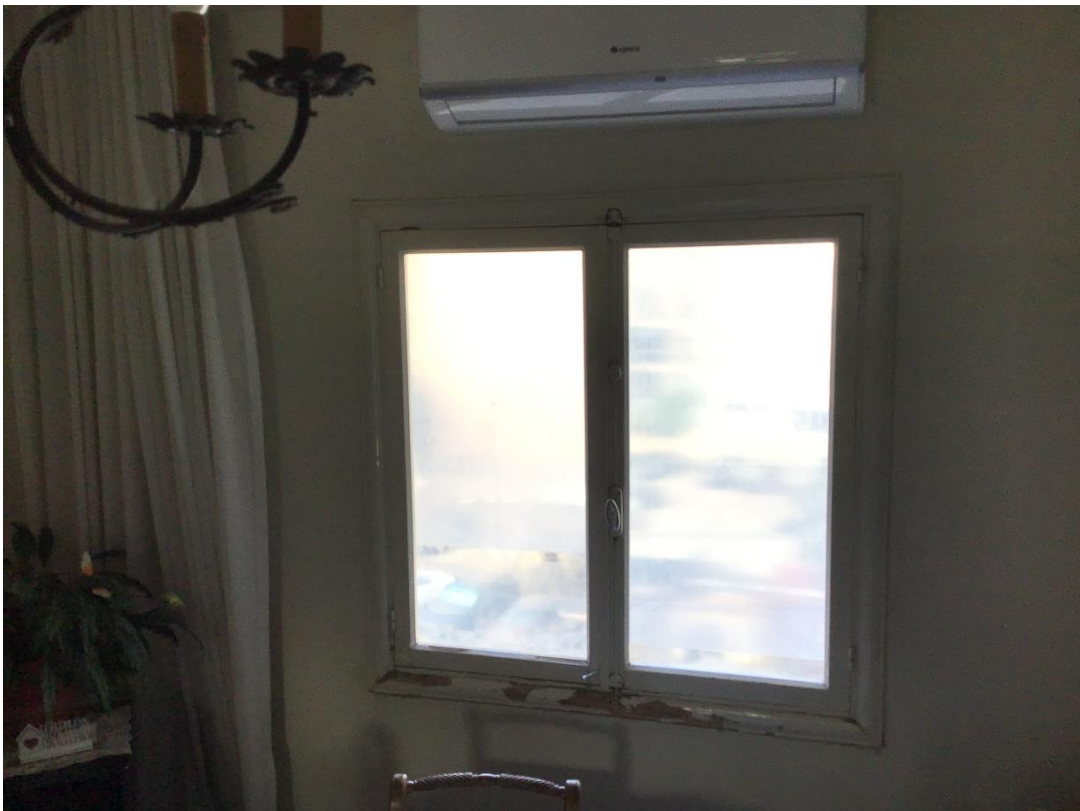
**Estimate Details:**

Net Total: \$838.00  
 Markup: \$0.00 (0%)  
 Tax: \$0.00  
**Estimate Total: \$838.00**

Building Type: Residential  
 Date Prepared: 2/10/2020

Cost Items				
Code	Description	Units / UOM	Unit Cost	Total
<b>1</b>	<b>Glass</b>			<b>\$13.00</b>
1.1	4mm Glass	1.000 m2	\$13.00	\$13.00
	4mm Glass	1'	\$13.00	
<b>2</b>	<b>Materials</b>			<b>\$750.00</b>
2.1	Window + accessories + glass	2.000	\$375.00	\$750.00
<b>3</b>	<b>Labor</b>			<b>\$75.00</b>
3.1	Carpenter	1.000 Day	\$40.00	\$40.00
	Carpenter	1'	\$40.00	
3.2	Second Installer	1.000 Day	\$35.00	\$35.00
	Second Installer	1'	\$35.00	

Net Total: \$838.00  
 Markup: \$0.00  
 Tax: \$0.00  
**Estimate Total: \$838.00**





**Steps of Hope**

4-8 Harley Crescent Condell Park NSW 2200

Ph: 0474000444

[sohope.org.au](http://sohope.org.au)

Email: [help@sohope.org.au](mailto:help@sohope.org.au)

ABN: 84636391298