

---

Q1264 - Adel I haber, 03/335271, zalka

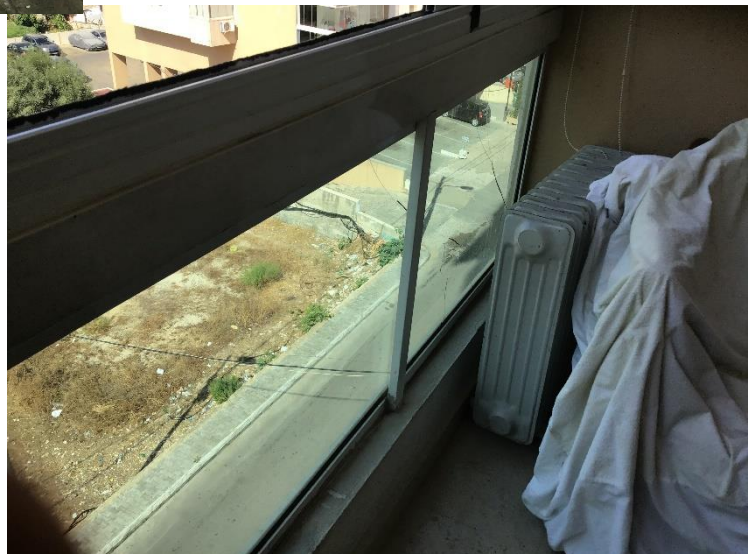
Rony Chiha  
4-8 Harley Crescent  
Condell Park  
NSW 2200  
P: +96170619421 M: +96171727274

**Quote Number: Q1264**  
Quote Valid for 30 days  
Building Type: Residential  
Quote Date: 26/10/2020

---

This apartment has been damaged by "Beirut Explosion" on the 4th of August 2020. Steps of Hope in collaboration with A-Tech Australia took the initiative to help in the renovation of damaged houses, to get people back to their homes before winter comes.

Apartment damages survey:



Q1264 - Adel I haber, 03/335271, zalka

## Estimate

### Customer:

Rony Chiha  
 4-8 Harley Crescent  
 Condell Park  
 NSW 2200  
 Ph: +96170619421  
 Email: help@sohope.org.au

### Estimate Details:

Net Total: \$350.00  
 Markup: \$0.00 (0%)  
 Tax: \$0.00  
**Estimate Total: \$350.00**

Building Type: Residential  
 Date Prepared: 26/10/2020

Cost Items				
Code	Description	Units / UOM	Unit Cost	Total
<b>1</b>	<b>Aluminium + Glass</b>			<b>\$70.00</b>
1.1	Triplex Glass	2.000 m2	\$35.00	\$70.00
	Triplex	2.000 m2	\$35.00	
<b>2</b>	<b>Materials</b>			<b>\$15.00</b>
2.1	Silicon	4.000 tube	\$3.75	\$15.00
	Silicon	4.000 tube	\$3.75	
<b>3</b>	<b>Labor</b>			<b>\$190.00</b>
3.1	Professional Installer	1.000 Day	\$55.00	\$55.00
	Professional Installer	1.000 Day	\$55.00	
3.2	Second Installer	1.000 Day	\$35.00	\$35.00
	Second Installer	1.000 Day	\$35.00	
3.3	Aluminium Adjustments + needed accessories	1.000	\$100.00	\$100.00
<b>4</b>	<b>Transportation</b>			<b>\$75.00</b>
4.1	transportation	1.000	\$75.00	\$75.00

Net Total: \$350.00  
 Markup: \$0.00  
 Tax: \$0.00  
**Estimate Total: \$350.00**



**Steps of Hope**

4-8 Harley Crescent Condell Park NSW 2200

Ph: 0474000444

[sohope.org.au](http://sohope.org.au)

Email: [help@sohope.org.au](mailto:help@sohope.org.au)

ABN: 84636391298



**Steps of Hope**

4-8 Harley Crescent Condell Park NSW 2200

Ph: 0474000444

[sohope.org.au](http://sohope.org.au)

Email: [help@sohope.org.au](mailto:help@sohope.org.au)

ABN: 84636391298