
Q1333 - Fouad khoury, 70/828050, achrafieh

Rony Chiha
4-8 Harley Crescent
Condell Park
NSW 2200
P: +96170619421 M: +96171727274

Quote Number: Q1333

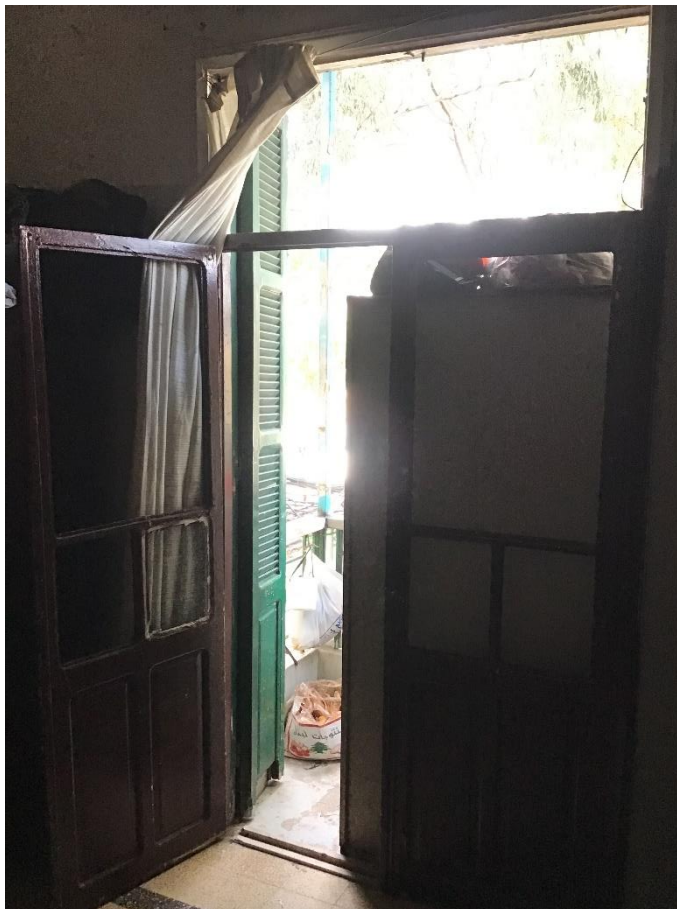
Quote Valid for 30 days

Building Type: Residential

Quote Date: 1/12/2020

This apartment has been damaged by "Beirut Explosion" on the 4th of August 2020. Steps of Hope in collaboration with A-Tech Australia took the initiative to help in the renovation of damaged houses, to get people back to their homes before winter comes.

Apartment damages survey:



Q1333 - Fouad khoury, 70/828050, achrafieh

Estimate**Customer:**

Rony Chiha
 4-8 Harley Crescent
 Condell Park
 NSW 2200
 Ph: +96170619421
 Email: help@sohope.org.au

Estimate Details:

Net Total: \$595.00
 Markup: \$0.00 (0%)
 Tax: \$0.00
Estimate Total: \$595.00

Building Type: Residential
 Date Prepared: 24/11/2020

Cost Items

Code	Description	Units / UOM	Unit Cost	Total
1	Aluminium and Glass			\$540.00
1.1	Aluminium Door Double Glazed	4.000 quantity	\$135.00	\$540.00
	Aluminium Door Double Glazed	4'	\$135.00	
2	Labor			\$55.00
2.1	Professional Installer	1.000 Day	\$55.00	\$55.00
	Professional Installer	1.000 Day	\$55.00	

Net Total: \$595.00

Markup: \$0.00

Tax: \$0.00

Estimate Total: \$595.00



Steps of Hope

4-8 Harley Crescent Condell Park NSW 2200

Ph: 0474000444

sohope.org.au

Email: help@sohope.org.au

ABN: 84636391298



Steps of Hope

4-8 Harley Crescent Condell Park NSW 2200

Ph: 0474000444

sohope.org.au

Email: help@sohope.org.au

ABN: 84636391298