
Q1005 - Dany Nasra / Mar Mikhael Church street / +96171235

Rony Chiha
4-8 Harley Crescent
Condell Park
NSW 2200
M: +61474000444

Quote Number: Q1005

Quote Valid for 30 days

Building Type: Residential

Quote Date: 24/08/2020

Mar Mikhayel Church, Beirut Mount Lebanon Governorate

This apartment has been damaged by "Beirut Explosion" on the 4th of August 2020.

Steps of Hope in collaboration with A-Tech Australia took the initiative to help in the renovation of damaged houses, to get people back to their homes before winter comes.

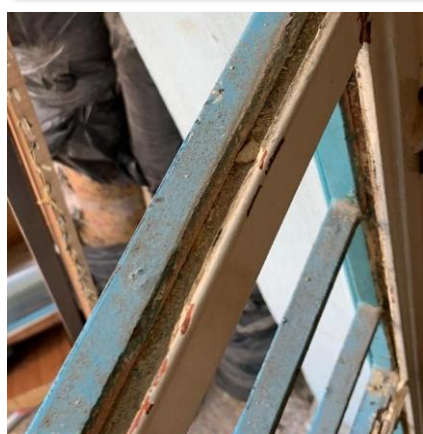
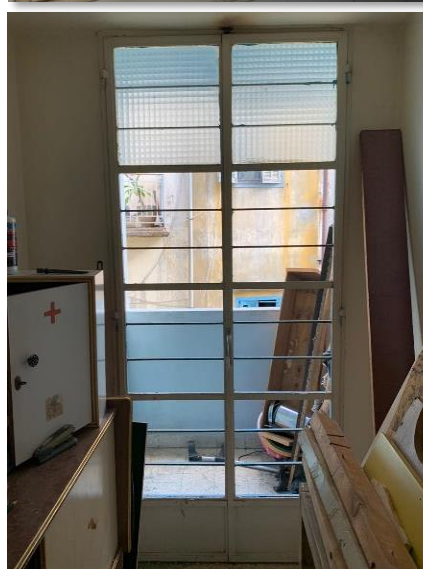
Apartment damages survey considering the glazed windows and doors:

- Windows having steel and wooden frames
- Frames need small reparations and cleaning
- Glass is totally damaged
- About 15.9 m2 of glass
- Silicon is needed
- Area needs about two days of labor work



Before

Glazed windows and doors



Specifications and Inclusions

Labor

- Professional Installer



- Second Installer



Specifications and Inclusions

Glass

- 4mm Clear Glass



Materials

- Silicon
- second Silicon order

**Steps of Hope**

4-8 Harley Crescent Condell Park NSW 2200

Ph: 0474000444

sohope.org.auEmail: help@sohope.org.au

ABN: 84636391298

Quoted Items

	Description of items			
1	Glass			
1.1	4mm Clear Glass	15.790	m2	\$205.27
	4mm Clear Glass	15.790	m2	
2	Materials			
2.1	Silicon	15.000	tube	\$56.25
2.2	second Silicon order	5.000	tube	\$18.75
3	Labor			
3.1	Professional Installer	1.000	Day	\$38.00
3.2	Second Installer	1.000	Day	\$25.00

**Steps of Hope**

4-8 Harley Crescent Condell Park NSW 2200

Ph: 0474000444

sohope.org.auEmail: help@sohope.org.au

ABN: 84636391298

Terms and Conditions

Quote Total:	\$343.27
Tax (Tax):	\$0.00
Total:	\$343.27

Case done – After photos









