
Q1009 - Elie Mrad, mdawar, 78806904, 03757712

Rony Chiha
4-8 Harley Crescent
Condell Park
NSW 2200
P: +96170619421 M: +96171727274

Quote Number: Q1009

Quote Valid for 30 days

Building Type: Residential

Quote Date: 26/08/2020

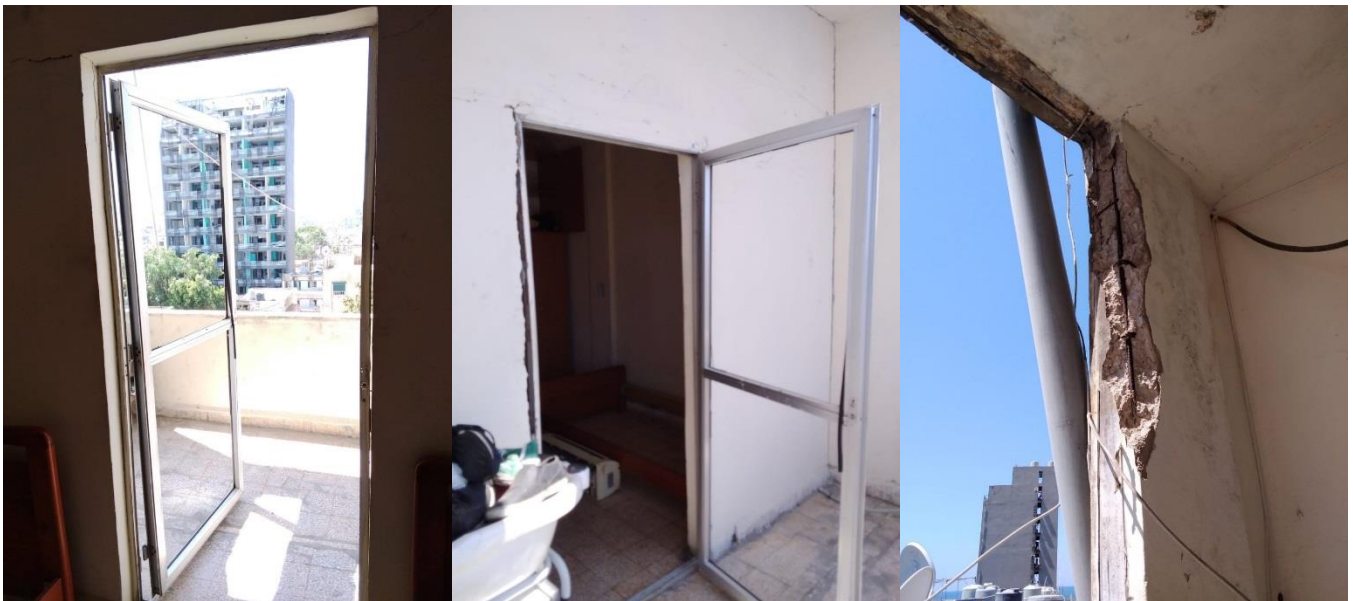
Karantina, mdawar, Beirut Beirut Governorate

This apartment has been damaged by "Beirut Explosion" on the 4th of August 2020.

Steps of Hope in collaboration with A-Tech Australia took the initiative to help in the renovation of damaged houses, to get people back to their homes before winter comes.

Apartment damages survey:

- The majority of the aluminium doors and panels are destroyed we need to install a new ones.
- The frames needs maintenance.
- Concrete maintenance is obligatory before we proceed to aluminium work.
- The apartment entry door need one hinge and maintenance.
- 2 days of work is needed
- One aluminium and glass installer with an assistant and one formann for concrete maintenance are needed to complete the work
- Aluminium profile : Old Sidem with 7.5 cm width of the rail.
- PS: A LOT OF ALUMINUM MAINTENANCE IS REQUIRED.



Specifications and Inclusions	
Aluminium	<ul style="list-style-type: none"> Aluminium window Aluminium Door
Glass	<ul style="list-style-type: none"> 4mm Clear Glass
Labor	<ul style="list-style-type: none"> Professional Installer Second Installer Forman
Materials	<ul style="list-style-type: none"> Hinges

Description	Dimension (cm)	Quantity	Notes
Glass	73.5 x 92	2	4mm
	46 x 104.5		4mm
Aluminum panel (Window)	94 x 120.5 Frame size	2	Old Sidem 7.5 cm rail width
	95.5 x 120.5	1	Old Sidem 7.5 cm rail width
	93 x 100	1	Old Sidem 7.5 cm rail width
Aluminum (door)	84 x 206	1	Fixed At left, Push door Old sidem
Hinge		2	1 for the aluminum door and second for the wood door

Q1009 - Elie Mrad, mdawar, 78806904, 03757712

Estimate

Customer:

Rony Chiha
 4-8 Harley Crescent
 Condell Park
 NSW 2200
 Ph: +96170619421
 Email: help@sohope.org.au

Estimate Details:

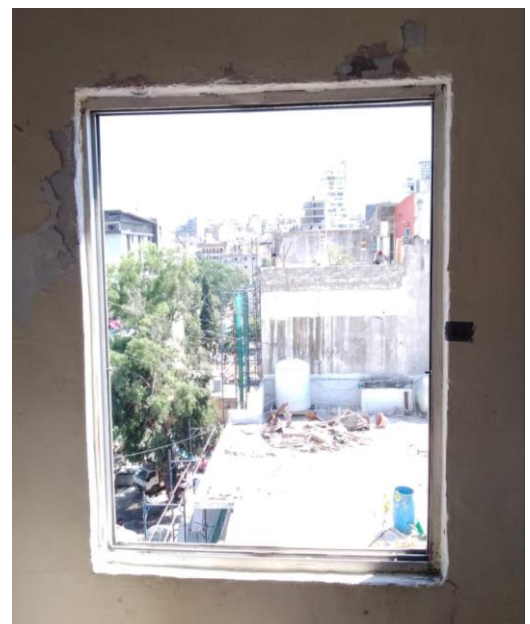
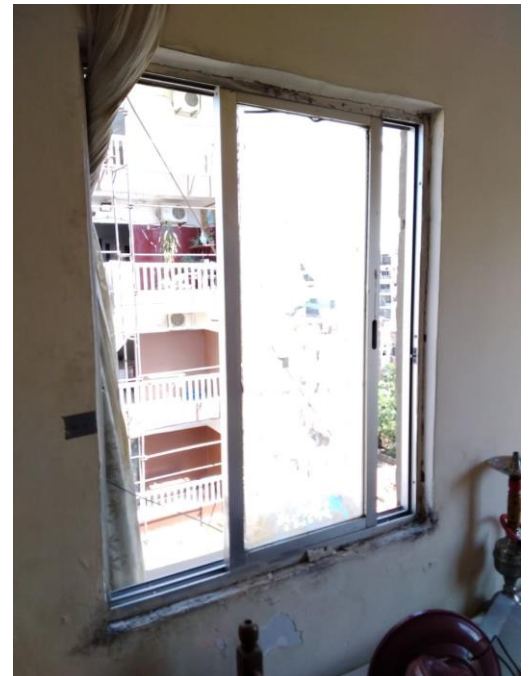
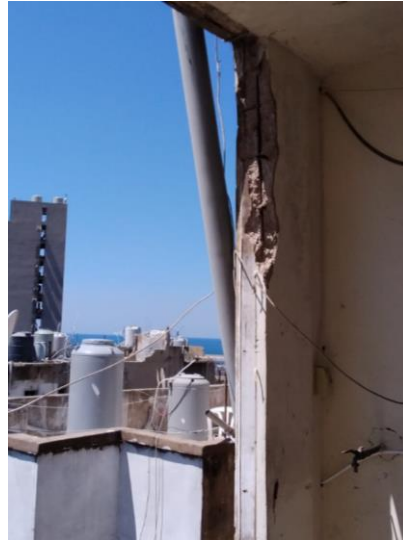
Net Total: \$1,152.50
 Markup: \$0.00 (0%)
 Tax: \$0.00
Estimate Total: \$1,152.50

Building Type: Residential
 Date Prepared: 24/08/2020

Cost Items				
Code	Description	Units / UOM	Unit Cost	Total
1	Materials			\$20.00
1.1	Hinges	2.000 quantity	\$10.00	\$20.00
2	Labor			\$164.00
2.1	Professional Installer	2.000 Day	\$38.00	\$76.00
	Professional Installer	2.000 Day	\$38.00	
2.2	Second Installer	2.000 Day	\$25.00	\$50.00
	Second Installer	2.000 Day	\$25.00	
2.3	Forman	1.000 Day	\$38.00	\$38.00
	Forman	1.000 Day	\$38.00	
3	Glass			\$26.00
	4mm			
3.1	4mm Clear Glass	2.000 m2	\$13.00	\$26.00
	4mm Clear Glass	2.000 m2	\$13.00	
4	Aluminium			\$942.50
	Maintanance + new Profiles			
4.1	Aluminium window	4.500 m2	\$100.00	\$450.00
	Aluminium window	4.500 quantity	\$100.00	
4.2	Aluminium Door	1.800 m2	\$100.00	\$180.00
	Aluminium Door	1.800 m2	\$100.00	
4.3	Aluminium Door	1.500 m2	\$125.00	\$187.50
	Aluminium Door	1.500 m2	\$125.00	
4.4	Aluminium Window	1.000	\$125.00	\$125.00
	Aluminium Window	1.000	\$125.00	



Quote Total:	\$1,152.50
Tax (Tax):	\$0.00
Total:	\$1,152.50



Case done – After photos





