
Q1015 - Tony Oueiss restaurant, Gemmayzeh, 03707108

Rony Chiha
4-8 Harley Crescent
Condell Park
NSW 2200
P: +96170619421 M: +96171727274

Quote Number: Q1015

Quote Valid for 30 days

Building Type: Shop

Quote Date: 26/08/2020

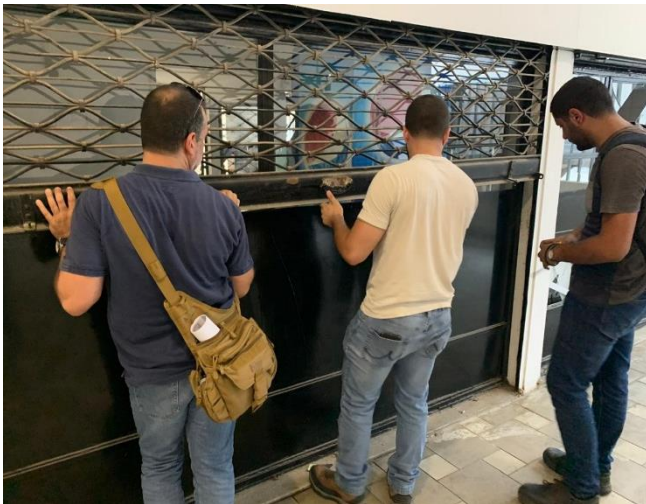
Gemmayzeh, Beirut Mount Lebanon Governorate

This apartment has been damaged by "Beirut Explosion" on the 4th of August 2020.

Steps of Hope in collaboration with A-Tech Australia took the initiative to help in the renovation of damaged houses, to get people back to their homes before winter comes.

Apartment damages survey:

- All the shop is composed of steel frames
- Most of the glass is broken and needs replacement.
- Glass thickness 4 cm
- Upstairs has 3 broken windows and the steel boxes need adjustment
- West side of the restaurant requires steel frame maintenance in addition to the glass
- There is a door where glass measurement must consider the door handle, a semi-circle with 11 cm radius and length of 28.5 cm
- The shop requires a minimum of 2 working days



Specifications and Inclusions

Glass

- 4mm Glass

Labor

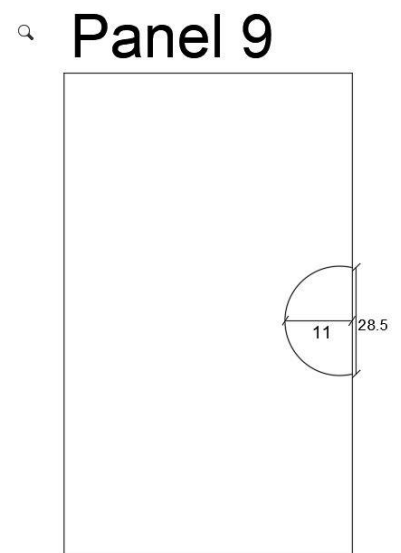
- Professional Installer
- Second Installer

Material

- Silicon

Glazing (4mm with steel frame)

Panel #	Dimension H x W	Quantity
1	59 x 47	1
2	53.5 x 44.5	2
3	53 x 47	1
4	52.5 x 44	2
5	54.5 x 52.5	1
6	57.5 x 45.5	3
7	74 x 95	1
8	270 x 146	1
9	90 x 152 (cut on site)	1
10	73 x 94	1
11	81.5 x 95.5	1
12	79 x 96	1
13	88 x 185	1
14	52.5 x 45.5	2
15	57.5 x 46.5	1
16	57.5 x 47.5	1



Q1015 - Tony Oueiss restaurant, Gemmayzeh,
 03707108

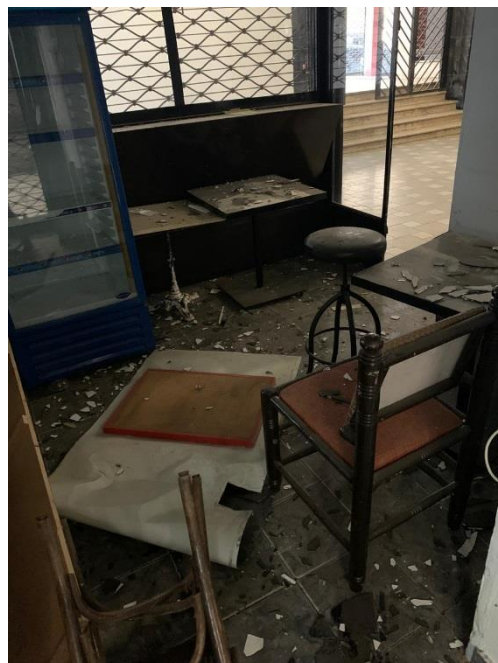
Estimate Details:

Net Total: \$564.50
 Markup: \$0.00 (0%)
 Tax: \$0.00
Estimate Total: \$564.50

Building Type: Shop
 Date Prepared: 25/08/2020

Cost Items					
Description	Units / UOM	Unit	Total		
1 Glass					\$182.00
1.1	4mm Glass	14.000 m2	\$13.00		\$182.00
	4mm Glass	14.000	\$13.00		
2 Labor					\$200.00
2.1	Professional Installer	2.000 Day	\$55.00		\$110.00
	Professional Installer	2.000 Day	\$55.00		
2.2	Second Installer	2.000 Day	\$25.00		\$50.00
	Second Installer	2.000 Day	\$25.00		
2.3	Blacksmith	1.000 Day	\$40.00		\$40.00
	Blacksmith	1.000 Day	\$40.00		
3 Material					\$182.50
3.1	Silicon	30.000 tube	\$3.75		\$112.50
	Silicon	30.000 tube	\$3.75		
3.2	steel accessories	1.000 quantity	\$70.00		\$70.00

Net Total: \$564.50
 Markup: \$0.00
 Tax: \$0.00
Estimate Total: \$564.50



Case done – After photos



