
Q1017 - Micheal Sayegh, Gemmayzeh, 03 497 379

Rony Chiha
4-8 Harley Crescent
Condell Park
NSW 2200
P: +96170619421 M: +96171727274

Quote Number: Q1017

Quote Valid for 30 days

Building Type: Residential

Quote Date: 27/08/2020

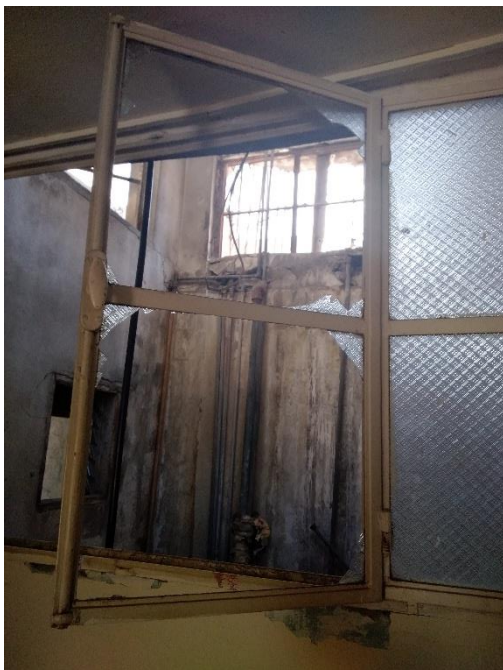
Gemmayzeh, Beirut Mount Lebanon Governorate

This apartment has been damaged by "Beirut Explosion" on the 4th of August 2020.

Steps of Hope in collaboration with A-Tech Australia took the initiative to help in the renovation of damaged houses, to get people back to their homes before winter comes.

Apartment damages surve :

- Steel Frames
- New glass required.
- Thickness 3mm Type-stoned glass Also, paste is needed
- 1 working day.





Steps of Hope

4-8 Harley Crescent Condell Park NSW 2200

Ph: 0474000444

sohope.org.au

Email: help@sohope.org.au

ABN: 84636391298

Specifications and Inclusions
Glass
<ul style="list-style-type: none">3mm Toughened Glass
Materials
<ul style="list-style-type: none">Silicon
Labor
<ul style="list-style-type: none">Professional Installer



Q1017 - Micheal Sayegh, Gemmayzeh, 03 497 379

Estimate

Customer:

Rony Chiha
4-8 Harley Crescent
Condell Park
NSW 2200
Ph: +96170619421
Email: help@sohope.org.au

Estimate Details:

Net Total: \$103.75
Markup: \$0.00 (0%)
Tax: \$0.00
Estimate Total: \$103.75

Building Type: Residential
Date Prepared: 25/08/2020

Cost Items				
Code	Description	Units / UOM	Unit Cost	Total
1	Glass			\$30.00
1.1	3mm Toughened Glass	2.000 m2	\$15.00	\$30.00
	3mm Toughened Glass	2.000 m2	\$15.00	
2	Materials			\$18.75
2.1	Silicon	5.000 tube	\$3.75	\$18.75
	Silicon	5.000 tube	\$3.75	
3	Labor			\$55.00
3.1	Professional Installer	1.000 Day	\$55.00	\$55.00
	Professional Installer	1.000 Day	\$55.00	
4	Site Clean-up			-
4.1	Sample Item #1	1.000	-	-

Net Total: \$103.75

Markup: \$0.00

Tax: \$0.00

Estimate Total: \$103.75

Case done – After photos

