

## Q1034 - Joe Fawaz/03852241/mar miter Bldg george issa 5th

Rony Chiha  
4-8 Harley Crescent  
Condell Park  
NSW 2200  
P: +96170619421 M: +96171727274

**Quote Number: Q1034**  
Quote Valid for 30 days  
Building Type: Residential  
Quote Date: 1/09/2020

*Achrafieh, Beirut Mount Lebanon Governorate*

This apartment has been damaged by "Beirut Explosion" on the 4th of August 2020.  
Steps of Hope in collaboration with A-Tech Australia took the initiative to help in the renovation of damaged houses, to get people back to their homes before winter comes.

### Apartment damages survey:

- All the glass is shattered at the house. There is also door handles that need to be changed.
- Two wood panels are broken, they need a carpenter to take measurements and inspect them.
- Also, the door's lock is broken.
- A blacksmith is needed for the maintenance of the steel frames.



Description	Dimensions (cm)	Quantity	Notes
1) Glass 4 mm, steel frame	47 x 80.5	1	Iron paste is required.  All dimensions are ready for cutting
	47.5 x 81	1	
	47.5 x 20.3	1	
	47.5 x 32	1	
	47.5 x 81	1	
2) Glass 4 mm, steel frame	46 x 26.4	2	
	56.3 x 46	1	
	26.5 x 46	1	
3) Glass 4 mm, steel frame	26 x 28.2	1	
	26 x 28.5	1	
4) Glass 4 mm, steel frame	81 x 43.5	1	
	31.7 x 43.5	1	
5) Glass 4 mm, steel frame	43 x 31.7	1	
6) Glass 4 mm, steel frame	41 x 31.5	1	
	41.3 x 31.5	1	
	41.3 x 80.7	2	
	41.3 x 31.5	1	
7) Glass 4 mm, steel frame	41.5 x 80.7	1	
	41 x 80.7	1	
8) glass 4 mm, steel frame	41 x 12	1	
	80.7 x 41.5	1	
9) Glass 4 mm, steel frame	80.7 x 41	2	

	12 x 41.5		
10) Glass 4 mm, steel frame	41 x 12		
11) Frosted Glass			

P.S: Two wood panels are broken, they need a carpenter to take measurements and inspect them. Also, the door's lock is broken.

A blacksmith is needed for the maintenance of the steel frames



Q1034 - Joe Fawaz/03852241/mar miter Bldg  
george issa 5th  
**Estimate**

**Customer:**

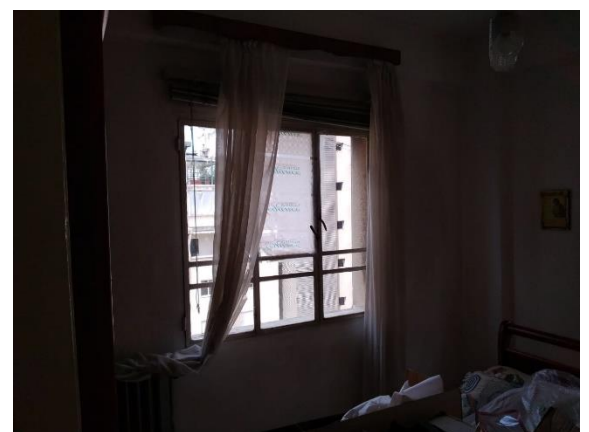
Rony Chiha  
4-8 Harley Crescent  
Condell Park  
NSW 2200  
Ph: +96170619421  
Email: [help@sohope.org.au](mailto:help@sohope.org.au)

**Estimate Details:**

Net Total: \$988.00  
Markup: \$0.00 (0%)  
Tax: \$0.00  
**Estimate Total: \$988.00**  
  
Building Type: Residential  
Date Prepared: 27/08/2020

Cost Items				
Code	Description	Units / UOM	Unit Cost	Total
<b>1</b>	<b>Glass</b>			<b>\$78.00</b>
1.1	4mm Glass	6.000 m2	\$13.00	\$78.00
	4mm Glass	6.000	\$13.00	
<b>2</b>	<b>Materials</b>			<b>\$750.00</b>
2.1	Frontage (4 shutters) + accessories + glass without paint	1.000	\$650.00	\$650.00
2.2	Window + glass without paint	1.000	\$100.00	\$100.00
<b>3</b>	<b>Labor</b>			<b>\$160.00</b>
3.1	Professional Installer	1.000 Day	\$55.00	\$55.00
	Professional Installer	1.000 Day	\$55.00	
3.2	Second Installer	1.000 Day	\$25.00	\$25.00
	Second Installer	1.000 Day	\$25.00	
3.3	Carpenter	1.000 Day	\$40.00	\$40.00
	Carpenter	1.000 Day	\$40.00	
3.4	Blacksmith	1.000 Day	\$40.00	\$40.00
	Blacksmith	1.000 Day	\$40.00	

Net Total: \$988.00  
Markup: \$0.00  
Tax: \$0.00  
**Estimate Total: \$988.00**



Case done – After photos













