



Q1035 - Miled Chouceir // 03873060

Rony Chiha
4-8 Harley Crescent
Condell Park
NSW 2200
P: +96170619421 M: +96171727274

Quote Number: Q1035

Quote Valid for 30 days

Building Type: Residential

Quote Date: 2/09/2020

Rmeil, Bayrut Beirut Governorate

This apartment has been damaged by "Beirut Explosion" on the 4th of August 2020.

Steps of Hope in collaboration with A-Tech Australia took the initiative to help in the renovation of damaged houses, to get people back to their homes before winter comes.

Apartment damages survey:

- Another organization donated all the glass.
- A carpenter is required to assess the place due to the bad condition of woods.
- Therefore, some needs maintenance, other need to be worked from scratch.
- The carpenter will have to work according to the dimensions of the glass since it's available.

**Steps of Hope**

4-8 Harley Crescent Condell Park NSW 2200

Ph: 0474000444

sohope.org.au

Email: help@sohope.org.au

ABN: 84636391298

Specifications and Inclusions

Materials

- Window (2 shutters) + paint + accessories without glass

Labor

- Carpenter
- Professional Installer



Q1035 - Miled Chouceir // 03873060

Estimate

Customer:

Rony Chiha
4-8 Harley Crescent
Condell Park
NSW 2200
Ph: +96170619421
Email: help@sohope.org.au

Estimate Details:

Net Total: \$695.00
Markup: \$0.00 (0%)
Tax: \$0.00
Estimate Total: \$695.00

Building Type: Residential
Date Prepared: 27/08/2020

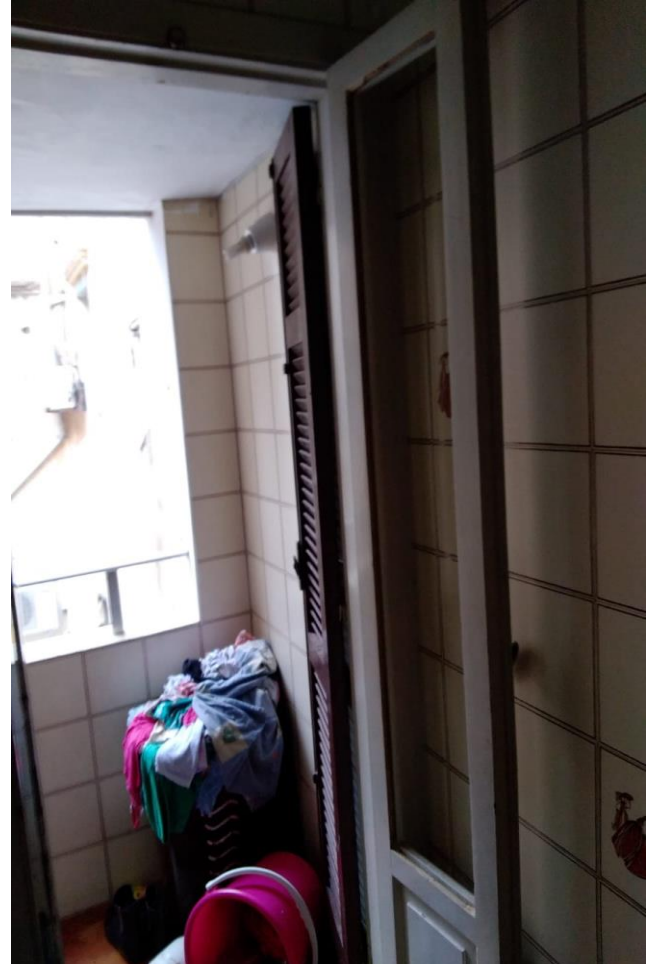
Cost Items				
Code	Description	Units / UOM	Unit Cost	Total
1	Materials			\$600.00
1.1	Window (2 shutters) + paint + accessories without glass	1.000	\$600.00	\$600.00
2	Labor			\$95.00
2.1	Carpenter	1.000 Day	\$40.00	\$40.00
	Carpenter	1.000 Day	\$40.00	
2.2	Professional Installer	1.000 Day	\$55.00	\$55.00
	Professional Installer	1.000 Day	\$55.00	

Net Total: \$695.00

Markup: \$0.00

Tax: \$0.00

Estimate Total: \$695.00



Case done – After photos



