

---

**Q1156 - Youssef gemayel, 03459555, Rmeil 5th floor**

Rony Chiha  
4-8 Harley Crescent  
Condell Park  
NSW 2200  
P: +96170619421 M: +96171727274

**Quote Number: Q1156**

Quote Valid for 30 days

Building Type: Residential

Quote Date: 29/09/2020

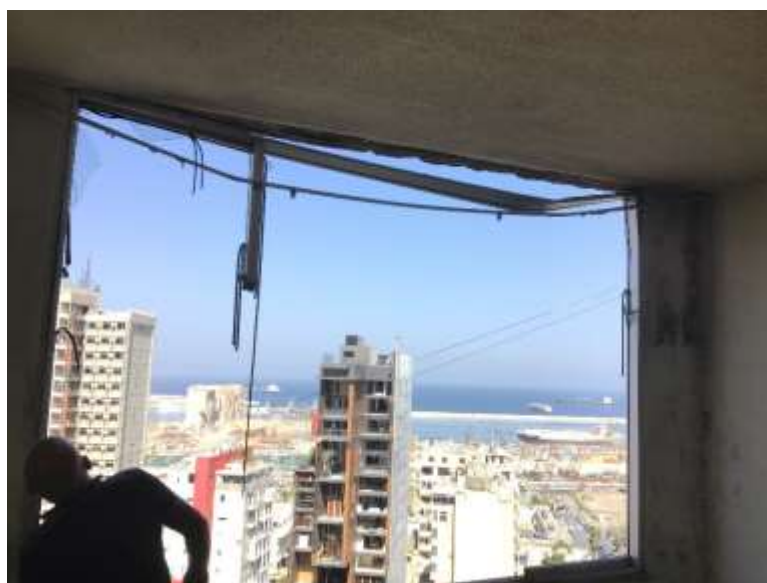
---

This apartment has been damaged by "Beirut Explosion" on the 4th of August 2020.

Steps of Hope took the initiative to help in the renovation of damaged houses, to get people back to their homes before winter comes.

Apartment damages survey:

- Need a concrete technician to assess the damage.
- Need a carpenter to assess the damage.





**Q1156 - Youssef gemayel, 03459555, Rmeil 5th floor**  
**Estimate**

**Customer:**

Rony Chiha  
 4-8 Harley Crescent  
 Condell Park  
 NSW 2200  
 Ph: +96170619421  
 Email: help@sohope.org.au

**Estimate Details:**

Net Total: \$2,351.00  
 Markup: \$0.00 (0%)  
 Tax: \$0.00  
**Estimate Total: \$2,351.00**  
 Building Type: Residential  
 Date Prepared: 29/09/2020

Cost Items				
Code	Description	Units / UOM	Unit Cost	Total
<b>1</b>	<b>Aluminium and Glass</b>			<b>\$965.00</b>
1.1	6mm Glass	3.000 m2	\$15.00	\$45.00
	6mm Clear Glass	3'	\$15.00	
1.2	Aluminium window Double Glazed	8.000 quantity	\$115.00	\$920.00
	Aluminium window Double Glazed	8'	\$115.00	
<b>2</b>	<b>Materials</b>			<b>\$1,050.00</b>
2.1	concrete work	1.000	\$150.00	\$150.00
2.2	Wood + accessories	1.000	\$900.00	\$900.00
<b>3</b>	<b>Labor</b>			<b>\$336.00</b>
3.1	Professional Installer	2.000 Day	\$55.00	\$110.00
	Professional Installer	2'	\$55.00	
3.2	Second Installer	2.000 Day	\$35.00	\$70.00
	Second Installer	2'	\$35.00	
3.3	Carpenter	2.000 Day	\$40.00	\$80.00
	Carpenter	2'	\$40.00	
3.4	Forman	2.000 Day	\$38.00	\$76.00
	Forman	2'	\$38.00	

Net Total: \$2,351.00  
 Markup: \$0.00  
 Tax: \$0.00  
**Estimate Total: \$2,351.00**

Case done – After photos







