

Q1180 - Nada eid, 03297442, achrafieh

Rony Chiha

4-8 Harley Crescent

Condell Park

NSW 2200

P: +96170619421 M: +96171727274

Quote Number: Q1180

Quote Valid for 30 days

Building Type: Residential

Quote Date: 2/10/2020

This apartment has been damaged by "Beirut Explosion" on the 4th of August 2020.

Steps of Hope in collaboration with A-Tech Australia took the initiative to help in the renovation of damaged houses, to get people back to their homes before winter comes.

Apartment damages survey:

- Need a steel technician.
- Broken glass.

6 mm clear

123 x 44.4

91.5 x 35.8

76.5 x 41.5

6 mm stoned

124.5 x 66

155.5 x 72

155.5 x 57.5



Q1180 - Nada eid, 03297442, achrafieh

Estimate

Customer:

Rony Chiha
 4-8 Harley Crescent
 Condell Park
 NSW 2200
 Ph: +96170619421
 Email: help@sohope.org.au

Estimate Details:

Net Total: \$355.00
 Markup: \$0.00 (0%)
 Tax: \$0.00
Estimate Total: \$355.00

Building Type: Residential
 Date Prepared: 2/10/2020

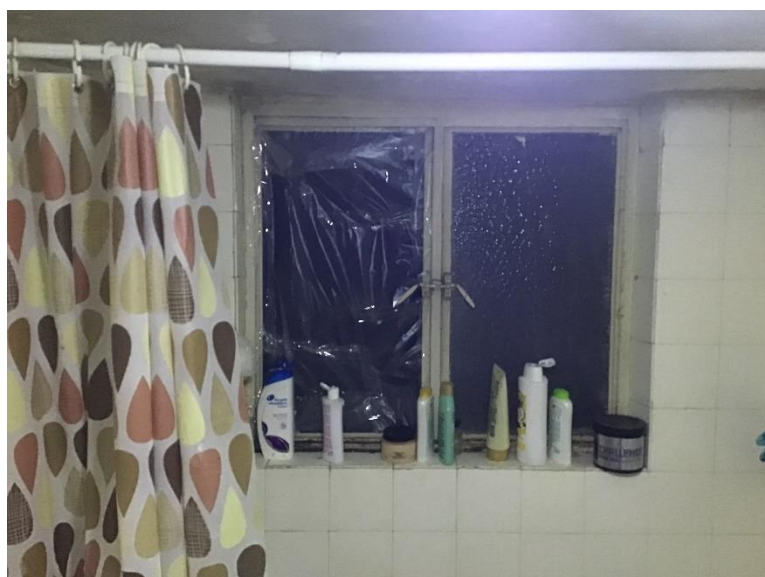
Cost Items				
Code	Description	Units / UOM	Unit Cost	Total
1	GLASS			\$75.00
1.1	6mm Clear Glass	3.000 m2	\$15.00	\$45.00
	6mm Clear Glass	3.000 m2	\$15.00	
1.2	6mm Frosted Glass	1.500 m2	\$20.00	\$30.00
	6mm Frosted Glass	1.500 m2	\$20.00	
2	Materials			\$150.00
2.1	Steel Maintenance	1.000 quantity	\$150.00	\$150.00
3	Labor			\$130.00
3.1	Professional Installer	1.000 Day	\$55.00	\$55.00
	Professional Installer	1.000 Day	\$55.00	
3.2	Second Installer	1.000 Day	\$35.00	\$35.00
	Second Installer	1.000 Day	\$35.00	
3.3	Blacksmith	1.000 Day	\$40.00	\$40.00
	Blacksmith	1.000 Day	\$40.00	

Net Total: \$355.00

Markup: \$0.00

Tax: \$0.00

Estimate Total: \$355.00



Case done – After photos





