
Q1202 - Roula tawk,03/545174, sad I baouchrieh

Rony Chiha
4-8 Harley Crescent
Condell Park
NSW 2200
P: +96170619421 M: +96171727274

Quote Number: Q1202

Quote Valid for 30 days

Building Type: Renovation

Quote Date: 9/10/2020

This apartment has been damaged by "Beirut Explosion" on the 4th of August 2020.

Steps of Hope in collaboration with A-Tech Australia took the initiative to help in the renovation of damaged houses, to get people back to their homes before winter comes.

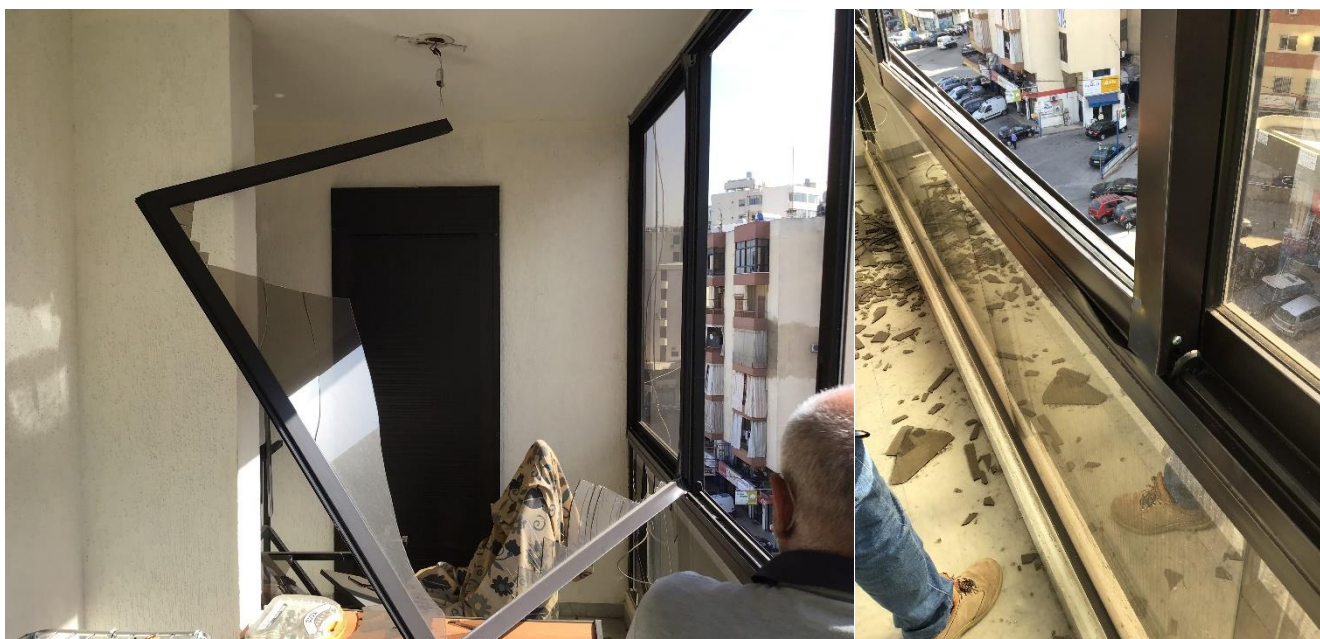
Apartment damages survey:

- Broken panel and glass
- 6 mm glass bronze:

82.7 x 111

72 x 206

- 6 panels aluminum lacke brown, 6mm glass
- For rail 530
- Height 169
- Sidem 2000
- Ps: we need to explode the panels than to install it
- Rail length = 530
- Upper frame length = 530





Q1202 - Roula tawk,03/545174, sad I baouchrieh

Estimate

Customer:

Rony Chiha
4-8 Harley Crescent
Condell Park
NSW 2200
Ph: +96170619421
Email: help@sohope.org.au

Estimate Details:

Net Total: \$1,176.00
Markup: \$0.00 (0%)
Tax: \$0.00
Estimate Total: \$1,176.00
Building Type: Renovation
Date Prepared: 9/10/2020

Cost Items

Code	Description	Units / UOM	Unit Cost	Total
1	Aluminium and Glass			\$1,086.00
1.1	Aluminium Window	9.000 m2	\$115.00	\$1,035.00
	Aluminium Window	9'	\$115.00	
1.2	6mm Bronze	3.000 m2	\$17.00	\$51.00
	6mm Bronze	3.000 m2	\$17.00	
2	Labor			\$90.00
2.1	Professional Installer	1.000 Day	\$55.00	\$55.00
	Professional Installer	1.000 Day	\$55.00	
2.2	Second Installer	1.000 Day	\$35.00	\$35.00
	Second Installer	1.000 Day	\$35.00	

Net Total: \$1,176.00

Markup: \$0.00

Tax: \$0.00

Estimate Total: \$1,176.00

