

Q1216 - Naji el helou 6 Gf , 03/245414, geitawi

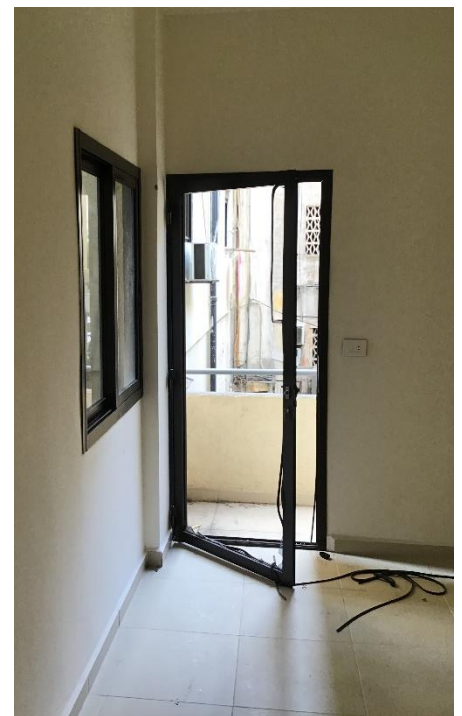
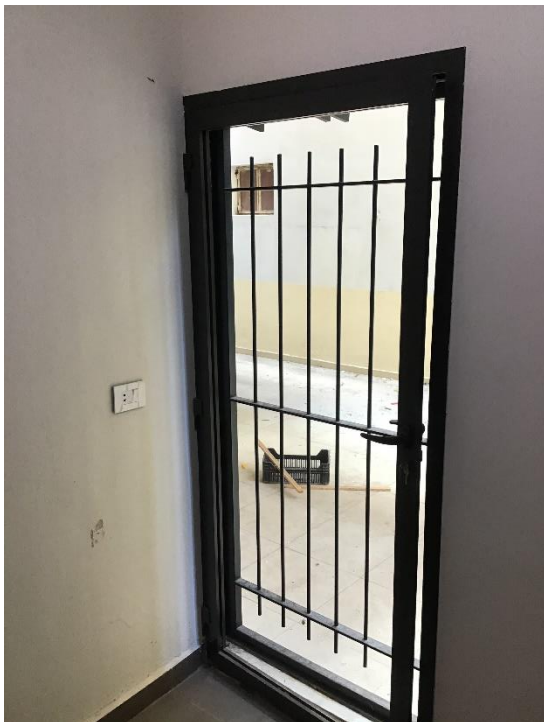
Rony Chiha
4-8 Harley Crescent
Condell Park
NSW 2200
P: +96170619421 M: +96171727274

Quote Number: Q1216
Quote Valid for 30 days
Building Type: Residential
Quote Date: 13/10/2020

This apartment has been damaged by "Beirut Explosion" on the 4th of August 2020. Steps of Hope in collaboration with A-Tech Australia took the initiative to help in the renovation of damaged houses, to get people back to their homes before winter comes.

Apartment damages survey :

- Need a carpenter to assess the damage
- 6 mm glass bronze
- 60 x 105.5/ qty 2
- 60 x 105 qty 2
- 72 x 198
- 82 x 198.
- Interlock length 113.8
- Upper head panel length 66.5
- Interlock length 113.2
- Upper head panel length 67 qty 2





Q1216 - Naji el helou 6 Gf , 03/245414, geitawi

Estimate

Customer:

Rony Chiha
4-8 Harley Crescent
Condell Park
NSW 2200
Ph: +96170619421
Email: help@sohope.org.au

Estimate Details:

Net Total: \$440.50
Markup: \$0.00 (0%)
Tax: \$0.00
Estimate Total: \$440.50
Building Type: Residential
Date Prepared: 13/10/2020

Cost Items

Code	Description	Units / UOM	Unit Cost	Total
1	Preliminary Items			\$260.50
1.1	6mm Bronze	6.500 m2	\$17.00	\$110.50
	6mm Bronze	6.500 m2	\$17.00	
1.2	Accessories	1.000	\$150.00	\$150.00
2	Labor			\$180.00
2.1	Professional Installer	2.000 Day	\$55.00	\$110.00
	Professional Installer	2.000 Day	\$55.00	
2.2	Second Installer	2.000 Day	\$35.00	\$70.00
	Second Installer	2.000 Day	\$35.00	
3	Site Clean-up			-
3.1	Sample Item #1	1.000	-	-

Net Total: \$440.50
Markup: \$0.00
Tax: \$0.00
Estimate Total: \$440.50