

---

## Q1253 - Valerie keyrouz, 03/266264, gemayzeh

Rony Chiha  
4-8 Harley Crescent  
Condell Park  
NSW 2200  
P: +96170619421 M: +96171727274

**Quote Number: Q1253**

Quote Valid for 30 days

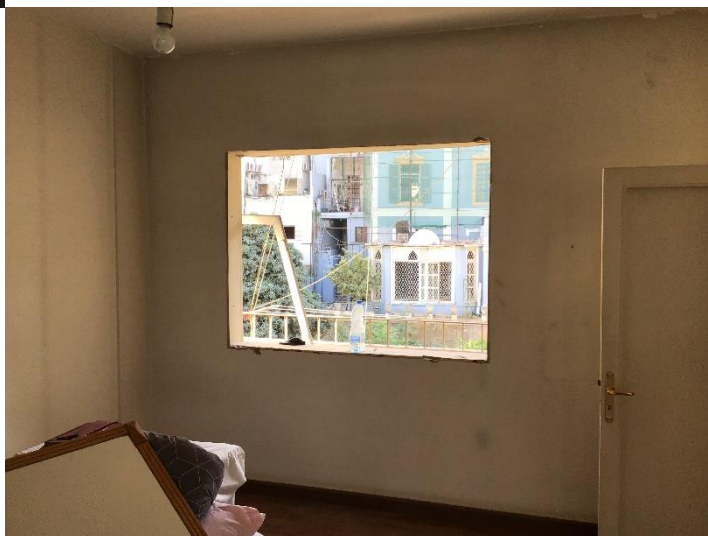
Building Type: Residential

Quote Date: 22/10/2020

This apartment has been damaged by "Beirut Explosion" on the 4th of August 2020.

Steps of Hope in collaboration with AusRelief took the initiative to help in the renovation of damaged houses, to get people back to their homes before winter comes.

### Apartment damages survey:



## Estimate

### Customer:

Rony Chiha  
 4-8 Harley Crescent  
 Condell Park  
 NSW 2200  
 Ph: +96170619421  
 Email: help@sohope.org.au

### Estimate Details:

Net Total: \$3,641.00  
 Markup: \$0.00 (0%)  
 Tax: \$0.00  
**Estimate Total: \$3,641.00**

Building Type: Residential  
 Date Prepared: 22/10/2020

Cost Items				
Code	Description	Units / UOM	Unit Cost	Total
<b>1</b>	<b>Aluminium and Glazing</b>			<b>\$1,531.00</b>
1.1	Aluminium window Double Glazed	7.000 quantity	\$135.00	\$945.00
	Aluminium window Double Glazed	7.000 quantity	\$135.00	
1.2	Aluminium Window	1.000 m2	\$115.00	\$115.00
	Aluminium Window	1.000	\$115.00	
1.3	Hinged Door 6mm	2.100 m2	\$115.00	\$241.50
1.4	Hinged Door Double	1.700 m2	\$135.00	\$229.50
<b>2</b>	<b>Materials</b>			<b>\$60.00</b>
2.1	Tube	2.000	\$30.00	\$60.00
<b>3</b>	<b>Labor</b>			<b>\$300.00</b>
3.1	Professional Installer	2.000 Day	\$55.00	\$110.00
	Professional Installer	2.000 Day	\$55.00	
3.2	Second Installer	2.000 Day	\$35.00	\$70.00
	Second Installer	2.000 Day	\$35.00	
3.3	Carpenter	3.000 Day	\$40.00	\$120.00
	Carpenter	3.000 Day	\$40.00	
<b>4</b>	<b>Wood Work</b>			<b>\$1,750.00</b>
4.1	Full window (144x119)	1.000	\$400.00	\$400.00
4.2	Frontage door (217x116)	1.000	\$550.00	\$550.00
4.3	Frontage door + box (18 cm)	1.000	\$800.00	\$800.00

Net Total: \$3,641.00

Markup: \$0.00

Tax: \$0.00

**Estimate Total: \$3,641.00**





Case done – After photos











