

---

**Q1267 - Elie hanna, 03/811310, achrafieh**

Rony Chiha  
4-8 Harley Crescent  
Condell Park  
NSW 2200  
P: +96170619421 M: +96171727274

**Quote Number: Q1267**

Quote Valid for 30 days

Building Type: Shop

Quote Date: 26/10/2020

---

*Achrafieh*

This apartment has been damaged by "Beirut Explosion" on the 4th of August 2020.

Steps of Hope took the initiative to help in the renovation of damaged houses, to get people back to their homes before winter comes.

Apartment damages survey:





Q1267 - Elie hanna, 03/811310, achrafieh

## Estimate

### Customer:

Rony Chiha  
4-8 Harley Crescent  
Condell Park  
NSW 2200  
Ph: +96170619421  
Email: [help@sohope.org.au](mailto:help@sohope.org.au)

### Estimate Details:

Net Total: \$1,031.75  
Markup: \$0.00 (0%)  
Tax: \$0.00  
**Estimate Total: \$1,031.75**

Building Type: Shop  
Date Prepared: 26/10/2020

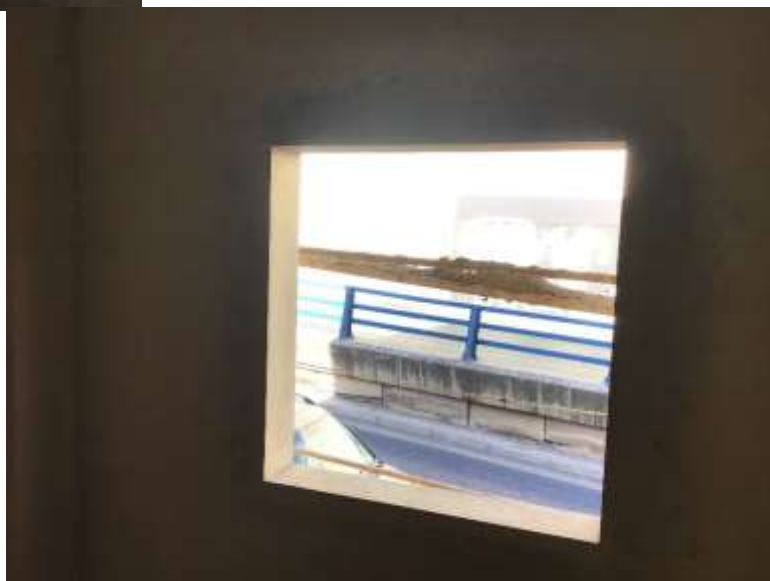
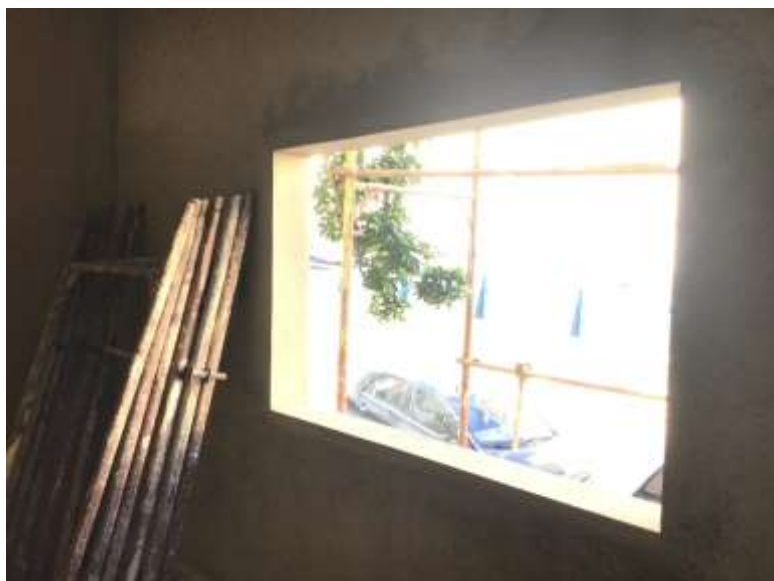
Cost Items				
Code	Description	Units / UOM	Unit Cost	Total
<b>1</b>	<b>Aluminium and Glass</b>			<b>\$713.00</b>
1.1	Aluminium Window	6.200 m2	\$115.00	\$713.00
	Aluminium Window	6.200	\$115.00	
<b>2</b>	<b>Materials</b>			<b>\$228.75</b>
2.1	Silicon	13.000 tube	\$3.75	\$48.75
	Silicon	13.000 tube	\$3.75	
2.2	Corner Aluminum	12.000	\$15.00	\$180.00
<b>3</b>	<b>Labor</b>			<b>\$90.00</b>
3.1	Professional Installer	1.000 Day	\$55.00	\$55.00
	Professional Installer	1.000 Day	\$55.00	
3.2	Second Installer	1.000 Day	\$35.00	\$35.00
	Second Installer	1.000 Day	\$35.00	

Net Total: \$1,031.75

Markup: \$0.00

Tax: \$0.00

**Estimate Total: \$1,031.75**



Case done – After photos

