
Q1333 - Fouad khoury, 70/828050, achrafieh

Rony Chiha
4-8 Harley Crescent
Condell Park
NSW 2200
P: +96170619421 M: +96171727274

Quote Number: Q1333

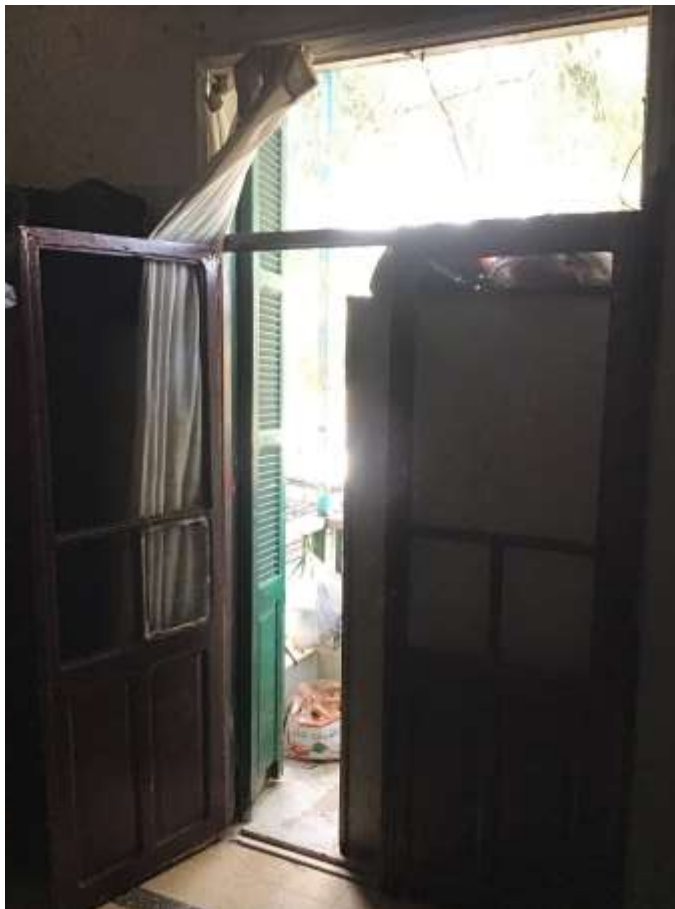
Quote Valid for 30 days

Building Type: Residential

Quote Date: 1/12/2020

This apartment has been damaged by "Beirut Explosion" on the 4th of August 2020.
Steps of Hope took the initiative to help in the renovation of damaged houses, to get people back to their homes before winter comes.

Apartment damages survey:





Q1333 - Fouad khoury, 70/828050, achrafieh

Estimate

Customer:

Rony Chiha
 4-8 Harley Crescent
 Condell Park
 NSW 2200
 Ph: +96170619421
 Email: help@sohope.org.au

Estimate Details:

Net Total: \$595.00
 Markup: \$0.00 (0%)
 Tax: \$0.00
Estimate Total: \$595.00

Building Type: Residential
 Date Prepared: 24/11/2020

Cost Items				
Code	Description	Units / UOM	Unit Cost	Total
1	Aluminium and Glass			\$540.00
1.1	Aluminium Door Double Glazed	4.000 quantity	\$135.00	\$540.00
	Aluminium Door Double Glazed	4'	\$135.00	
2	Labor			\$55.00
2.1	Professional Installer	1.000 Day	\$55.00	\$55.00
	Professional Installer	1.000 Day	\$55.00	

Net Total: \$595.00
 Markup: \$0.00
 Tax: \$0.00
Estimate Total: \$595.00